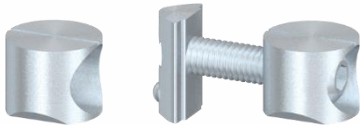
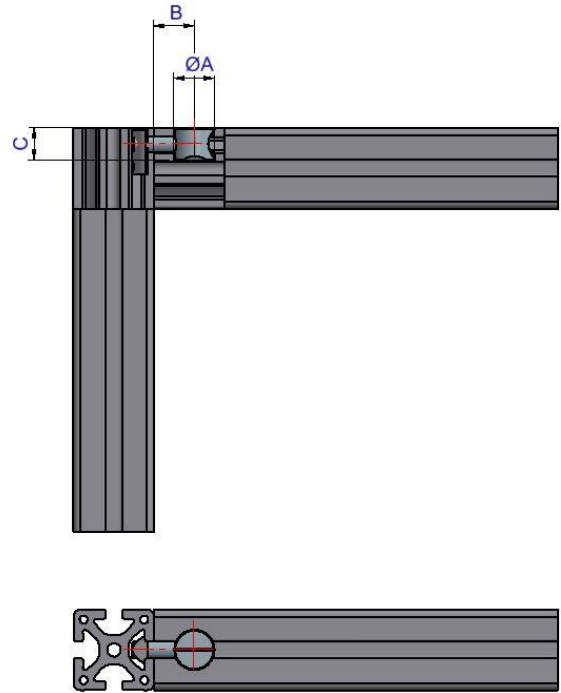
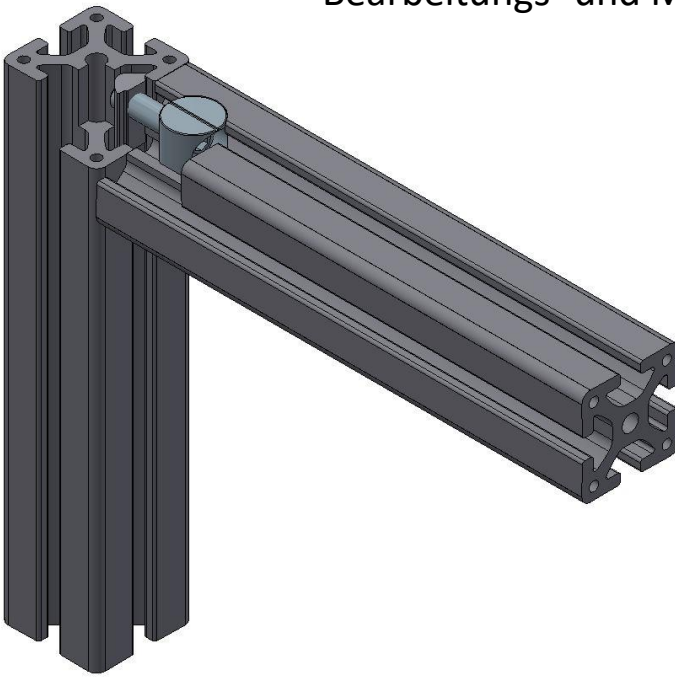


Bearbeitungs- und Montagehinweise



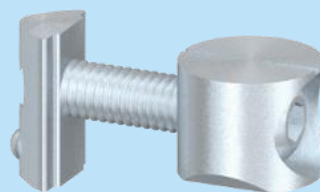
40

Set 40

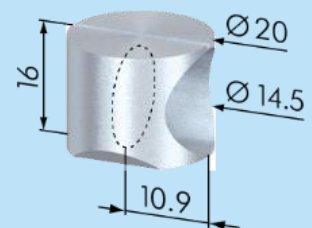
Paletti
Profilsysteme

Universalspanner 40

- Nutenstein zum Einstecken in die Nut
- Bohrung für Spanngehäuse: $\varnothing 20$ mm (A), 20 mm vom Profilende (B), 16mm tief (C)
- Werkzeug: 5mm Inbuschlüssel
- Anzugsdrehmoment: 25 Nm



SV1801V



SV1800V